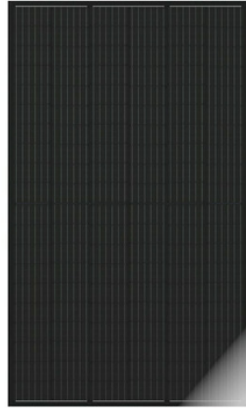
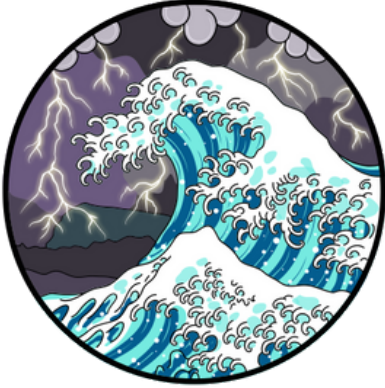


TIER-ONE SOLAR PANELS

COMPARISON CHART

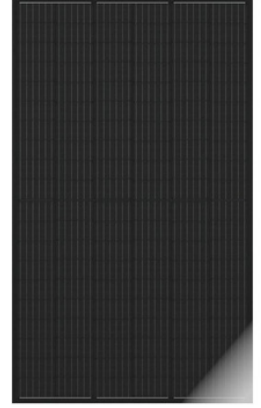
60-66 CELL



QCELLS
a Hanwha company



Trina



LONGI

ABOUT

QCELLS G10+

TRINA VERTEX S

LONGI LR4-60

Manufacturer warranty

Product - 25 years
Performance - 25
years

Product - 25 years
Performance - 25
years

Product - 12 years
Performance - 25
years

Price

\$\$\$

\$\$\$

\$\$

Wattage

400W

390W

360W

Cell count

66 cell

60 cell

60 cell

Colour

Black frame &
black backsheet

Black frame &
black backsheet

Black frame &
black backsheet

Dimensions

74" x 41.1"

69" x 43.1"

68.5" x 40.6"

Ideal for

Residential
roof tops

Residential
roof tops

Residential
roof tops

Manufacturing origin

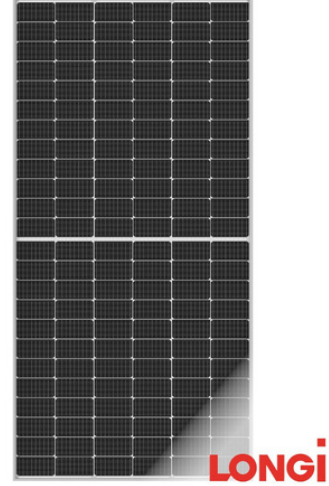
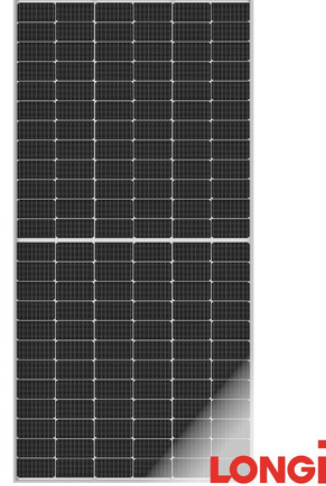
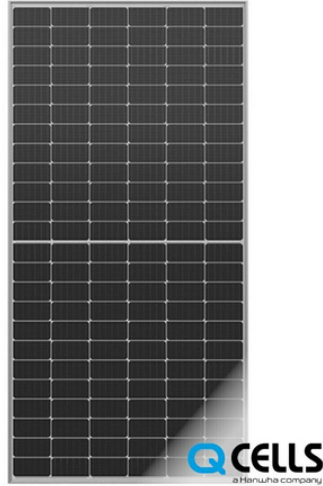
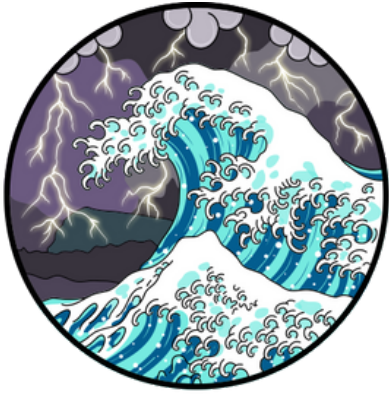
South Korea, USA

China

China, Vietnam,
Malaysia

TIER-ONE SOLAR PANELS COMPARISON CHART

72-78 CELL



ABOUT

QCELLS XL-G10

LONGI LR4-72

LONGI LR5 BI-FACIAL

Manufacturer warranty

Product - 12 years
Performance - 25
years

Product - 12 years
Performance - 25
years

Product - 12 years
Performance - 30
years

Price

\$\$\$

\$\$

\$\$\$

Wattage

480W

450W

545W

Cell count

78 cell

72 cell

72 cell bi-facial

Colour

Silver frame & white
back sheet

Silver frame & white
back sheet

Silver frame & white
back sheet

Dimensions

87.2" x 41.1"

82.5" x 40.1"

88.9" x 44.6"

Ideal for

Residential roof tops,
ground mount or
commercial

Residential roof tops,
ground mount or
commercial

Pergolas or ground
mount.

Manufacturing origin

South Korea, USA

China, Vietnam,
Malaysia

China, Vietnam,
Malaysia